

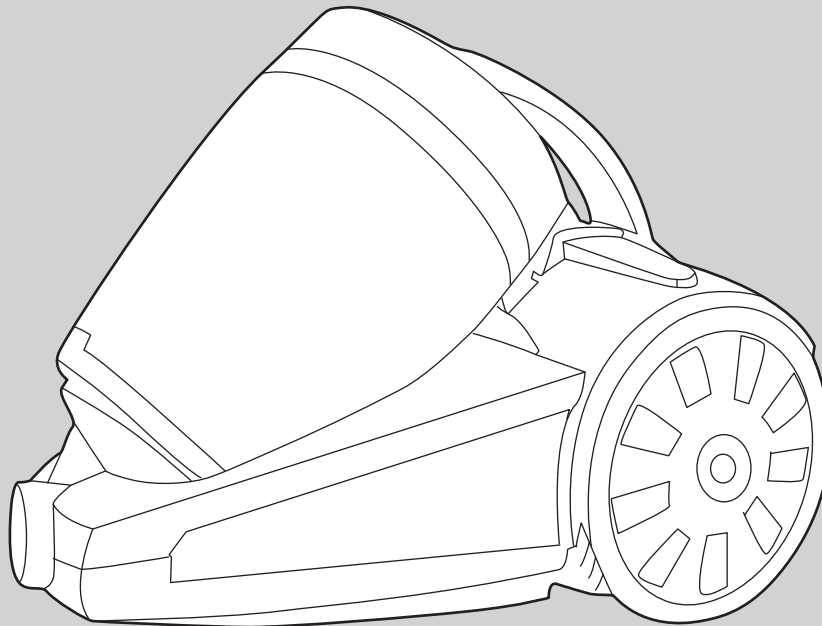
VC71067 MUK Rev5

morphy richards®



PERFORM AIR Endurance Bagless
Cylinder Vacuum Cleaner

Please read and keep these instructions for future use



Contact us

Helpline

If you are having a problem with your appliance, please call our Helpline, as we are more likely to be able to help than the store you purchased the item from. Please have the product name, model number and serial number to hand when you call to help us deal with your enquiry quicker.

UK Helpline: 0844 871 0960

IRE Helpline: 1800 409 119

Spares: 0844 873 0726

For competitions, product hints and tips and more join us at

www.morphyrichards.co.uk/blog

www.facebook.com/morphyrichardsuk

[@loveyourmorphy](https://twitter.com/loveyourmorphy)

www.morphyrichards.com

* Register online for your 3 year guarantee. See back of this instruction book for details. (UK and Ireland customers only)

Health and Safety

The use of any electrical appliance requires the following common sense safety rules.

Please read these instructions carefully before using the product.

- **WARNING: Whenever the cleaner is in use, due to the risk of entrapment in rotating parts, keep loose clothing, hair, fingers etc. away from the brush bar, nozzle and any hand-held accessories.**
- **WARNING: Disconnect from the mains supply before carrying out any routine maintenance, such as cleaning any blockages, changing any filters or accessing the floor nozzle.**
- This appliance can be used by children aged from 8 years and above and persons with reduced physical, sensory or mental capabilities, or lack of experience and knowledge, if they have been given supervision or instruction concerning the use of the appliance in a safe way and understand the hazards involved.
- Children shall not play with the appliance.
- Cleaning and user maintenance shall not be undertaken by children without supervision.

Personal safety

- **WARNING: Only lift the product by the carry handle (7).**
- Always disconnect the appliance from the mains supply after use.
- Never use in the presence of explosive liquid or vapours.
- Never pick up inflammable or poisonous liquids such as petrol, copier toner or other volatile substances. Never pick up acids, asbestos or asbestos dust.
- Never touch the plug or cable with wet hands.
- Do not immerse cord, plug or cleaner in water or other liquid.
- The appliance must never be left running unsupervised.

Location

- Do not use or keep this product outside.
- Do not store the appliance near hot surfaces eg. ovens or heating appliances.

Mains cable

- If the supply cord is damaged, it must be replaced by the manufacturer, its service agent, or similarly qualified person to avoid a hazard.

- Do not allow the mains lead to become strained or run this appliance over it.

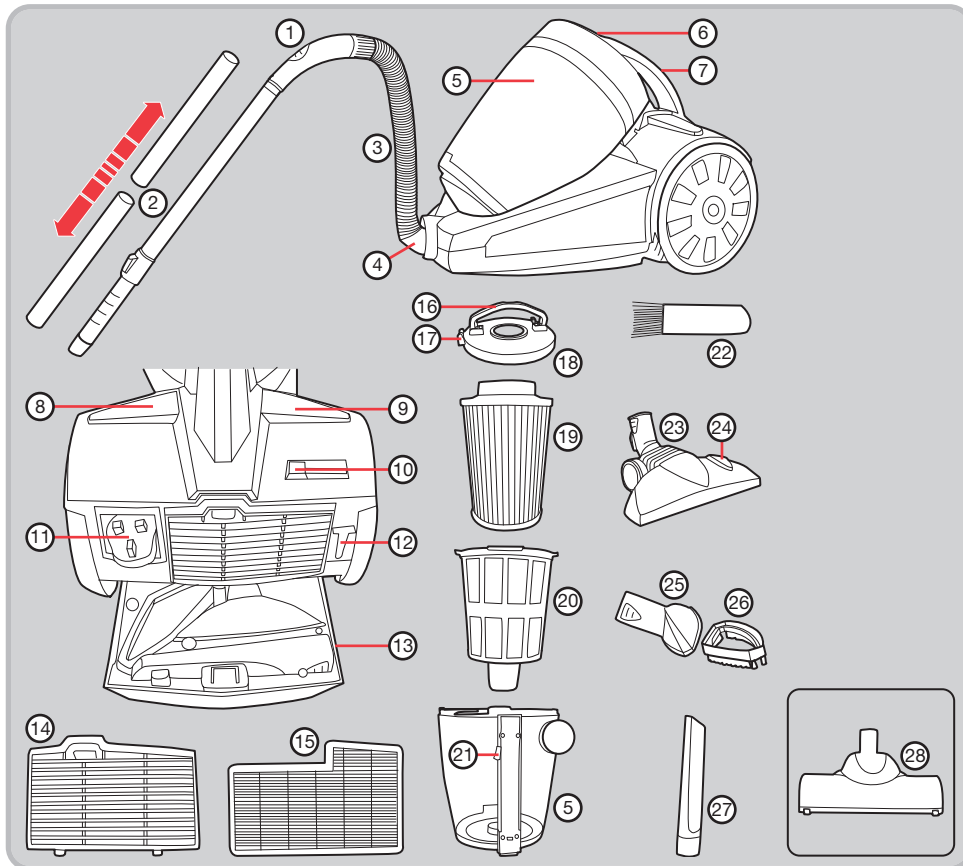
Product safety

- Never use the appliance without the filters being installed.
- Never use the appliance to vacuum hot ashes, broken glass, sharp objects or liquids.
- Use only Morphy Richards spare parts and accessories.
- Never modify the cleaner in any way.
- Repairs to electrical appliances are only to be undertaken by trained professionals. Unprofessional repairs can be dangerous for users.

Electrical requirements

- Check that the voltage on the rating plate of your appliance corresponds with your house electricity supply which must be A.C. (Alternating Current).
- Should the fuse in the mains plug require changing, a 13 amp BS1362 fuse must be fitted.

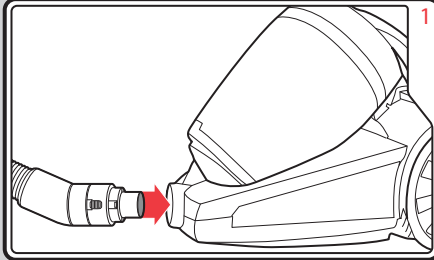
Product overview



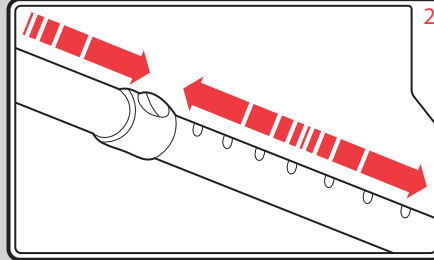
Features

- | | | |
|--|---|---|
| (1) Hose handle with suction control | (9) On/Off button | (21) Dust canister lid release |
| (2) Tube(s): 2 separate extension tubes, or 1 single telescopic tube (length adjustable), dependent on model | (10) Eco Switch | (22) Filter cleaning brush |
| (3) Hose | (11) Power plug and cord | (23) Combination floor nozzle |
| (4) Hose inlet | (12) Tube standby slot | (24) Brush adjustment switch |
| (5) Dust canister | (13) Tool storage drawer | (25) Upholstery nozzle |
| (6) Dust canister release button | (14) Exhaust filter cover | (26) Dusting brush (attaches to (25)) |
| (7) Carry handle | (15) Exhaust filter | (27) Crevice tool |
| (8) Automatic cable rewind button | (16) Dust canister lid handle | NOTE: (25), (26), (27) are stored in the tool storage drawer (13) |
| | (17) Dust canister empty button | (28) Turbo nozzle (certain models only) |
| | (18) Dust canister lid | |
| | (19) Pleated, washable dust canister filter | |
| | (20) Mesh filter cover | |

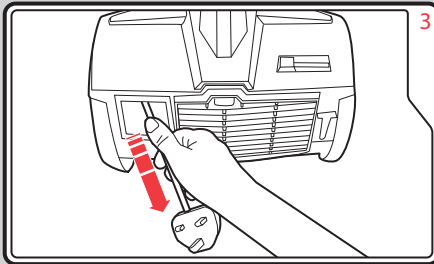
Operating / Assembly



Push the 360° rotating head on the hose (3) into the hose inlet (4) on the vacuum cleaner.
To remove, press the buttons on the hose connector and pull out.

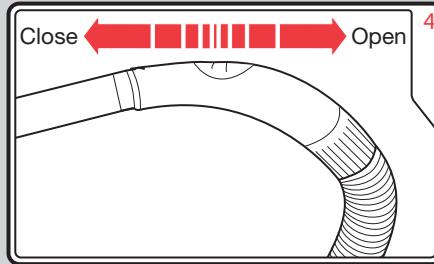


Attach either the extension tubes or the telescopic tube (2) (dependent on model) to the handle end (1) of the hose (3). Extend the telescopic tube to the required length by pressing down the tube release button and pulling out the tube. Attach the required accessory to end of the tube.



Always pull out the power cord (11) to its maximum length (indicated by the yellow tag on the cable). Plug the appliance into the mains supply. Push the On/Off button (9) to start the motor.

IMPORTANT: Ensure that the appliance is never left unattended whilst it is switched on.

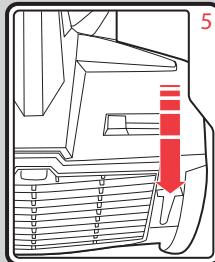
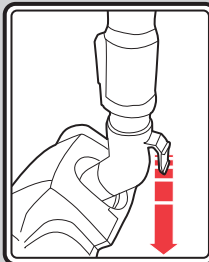


The suction power can be varied to suit the surface being cleaned by using the Eco Switch (10), (see the table on page 5 for guideline settings).

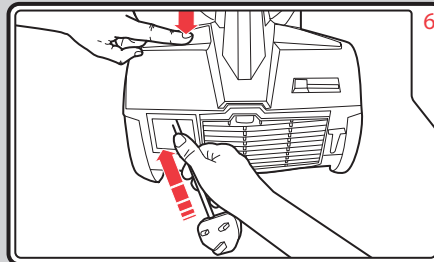
The suction power can also be adjusted using the suction control (1) on the hose handle.

Closed: full suction

Open: reduced suction



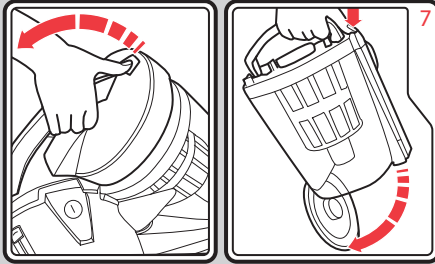
During short breaks in cleaning, the tube(s) (2) can be held in an upright, 'standby' position. Rotate the floor nozzle (23) or (28) until the lug on the neck can be fitted into the tube standby slot (12) on the rear of the appliance, whilst you move furniture for instance.



Switch off the appliance. Remove the plug from the mains supply and rewind the power cable using the cable rewind button (8).

WARNING: When using the cable rewind, always hold the plug as the cable will rewind quickly.

Operating / Assembly (continued)



To obtain the best results from your cleaner, empty the dust canister (5) regularly, otherwise the airflow and cleaning power will be reduced.

1. Unplug the cleaner from the mains outlet.
2. Press the dust canister release button (6), pull back the hinged lid by the carry handle (7) (as shown) and pull the canister away from the main body.
3. Hold the dust canister (5) over a dustbin. Turn the yellow dial (a minimum of 5 revolutions) to agitate the fine dust between the filter pleats and restore

the air flow.

4. Press the dust canister empty button (17) near the handle (16) on the dust canister lid (18). This opens the door at the base of the canister for the contents to be emptied out (as shown).
5. Re-attach the dust canister to the main body. Feed the base onto the unit first and push the top back until it clicks into place. Then push the hinged lid back into place to secure the canister.

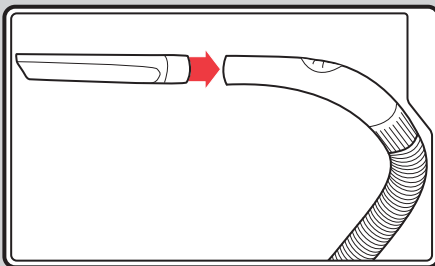
Allergy sufferers

When emptying any vacuum cleaner, it is difficult to avoid exposure to dust. To minimise this risk, please ensure that you encase the dust canister in a large bag to empty it. Close the bag as tightly as possible round the dust canister. Remove the dust canister and close the bag as tightly and quickly as possible and dispose of this immediately. It is advisable to wear disposable gloves and a face mask while emptying the cleaner. If at all possible, ask a non allergy sufferer to empty the dust canister when required.

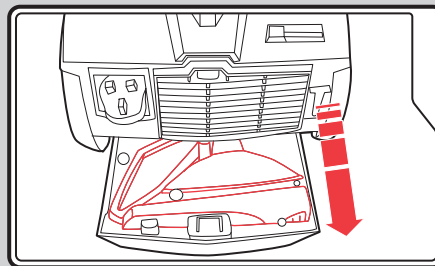
Eco Switch power setting				
Application	 Curtains and delicate fabrics Shelves and hard surfaces	 Textiles and upholstery	 Floor coverings, such as rugs, economy setting for carpets	 Carpets or hard floor coverings

Using tools and accessories




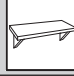

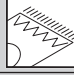


Unwind the power cord (11) and plug in to the mains outlet as in step 3 of 'Operating / Assembly', page 4.



The appropriate cleaning tool (25) or (27) can be attached directly to the hose handle (1), or the tube(s) (2) can be used between the hose handle and the tool.



The crevice tool (27), upholstery nozzle (25), and dusting brush attachment (26) may be stored in the tool storage drawer (13) at the rear of the vacuum cleaner.

Standard accessories	Application
	 Textiles and upholstery
	 Shelves and hard surfaces
	 Carpets and other textile floor coverings (brushes up on combination floor nozzle)
	 Settings for heavy dirt and smooth floors (brushes down on combination floor nozzle)

Tools and accessories

Combination floor nozzle (23)

This nozzle is suitable for general purpose cleaning on a wide variety of floor coverings.

Turbo nozzle (28) (certain models only)

This nozzle is suitable for cleaning and rejuvenating cut pile carpets and is ideal for picking up stubborn dirt and pet and human hairs.

Cleaning the turbo nozzle (certain models only)

The turbo nozzle (28) should be regularly cleaned and any hairs or fibres wrapped around the brush bar removed to maintain optimum performance.

Upholstery nozzle (25)

This nozzle is ideal for textiles, carpet, upholstery and stairs etc.

Dusting brush (26)

This tool is ideal for vacuuming pelmets and delicate objects and surfaces. This attachment clips on to the upholstery nozzle (25).

Crevice tool (27)

This tool is ideal for awkward places, corners, and behind radiators etc.

Storage

When finished cleaning, switch off the appliance and remove the plug from the mains supply. Press and hold the automatic cable rewind button (8) until the power cord (11) retracts fully into the machine.

NOTE: Always store the vacuum cleaner base down.

Safety cut-out

If the cleaner overheats, a motor protection thermostat will automatically switch the motor off. If this happens, switch the cleaner off, unplug from the power supply and leave the cleaner to cool for at least 60 minutes. Check the airways for blockages, empty the dust canister and clean the filters before restarting.

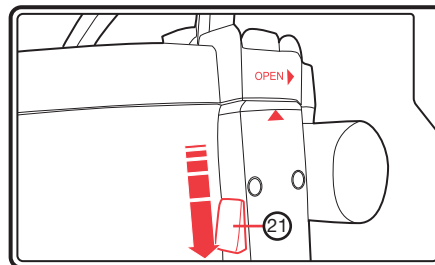
Maintenance - Filters

The guarantee may be invalidated if the motor is damaged due to: using the appliance without the filters installed; not cleaning the filters; or not replacing damaged filters.

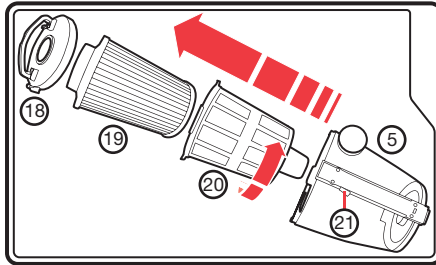
Cleaning the dust canister filter (19)

To maintain suction, the dust canister filter must be cleaned each time the dust canister (5) is emptied.

- Follow steps 1-4 of point 7 of 'Operating / Assembly', page 5.
- Access the filter assembly by removing the dust canister lid (18). Slide the lid release button (21) down then rotate the lid anti-clockwise.



3. Rotate the mesh filter cover (20) clockwise to disassemble the filter assembly.



4. Use the filter cleaning brush (22) to remove any fluff from the outside of the mesh filter cover (20) or in between the pleats of the dust canister filter (19).

IMPORTANT: The filter and cover may also be washed but must be left to thoroughly air dry before re-use.

IMPORTANT: Do not wash the filter and cover with hot water or detergents.

IMPORTANT: Do not use heated appliances to dry the filter or cover.

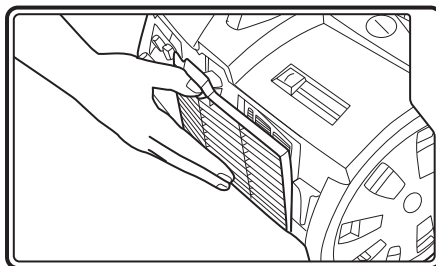
5. To re-assemble, locate the dust canister filter into the lid then secure into place with the mesh filter cover by rotating the mesh filter cover anti-clockwise.
6. Fit the lid with filter assembly onto the canister, then rotate clockwise until it locks into place.
7. Re-attach the dust canister to the main body. Feed the base onto the unit first and push the top back until it clicks into place. Then push the hinged lid back into place to secure the canister.

Replacing the exhaust filter

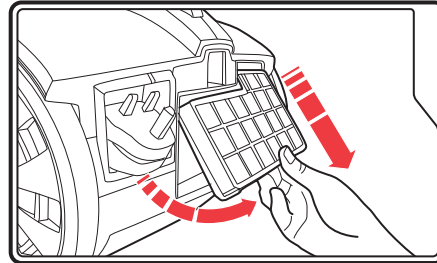
To maintain high efficiency, the exhaust filter should be replaced every 6 months.

The exhaust filter (15) is located behind the exhaust filter cover (14) at the rear of the vacuum cleaner.

1. Release the filter cover by pressing down on the release lever.



2. Remove the exhaust filter.



3. To refit the filter, first hook the top of the filter into the filter recess then push the bottom of the filter into location.
4. After fitting the filter, re-fit the exhaust filter cover by hooking the bottom of the cover in first and then pushing the top into place until it clicks fully closed.

Hints and tips

Cleaning and maintenance

Unplug from the mains supply before cleaning. The vacuum cleaner, especially the dust compartment and all accessories, can be cleaned using a damp cloth or a non-abrasive domestic cleaner and wiped dry.

To keep the underside of the combination floor nozzle clean, vacuum it at regular intervals using the crevice tool.

Purchasing filters

Use only genuine replacement filters which can be purchased from specialist retailers or by calling our spare parts helpline number: 0844 873 0726.

VC71067 MUK Rev5 09/12

Registering your 3 year guarantee

Your standard 1 year guarantee is extended for an additional 2 years when you register the product within 28 days of purchase with Morphy Richards. If you do not register the product with Morphy Richards within 28 days, your product is guaranteed for 1 year. To validate your 3 year guarantee, register with us online at www.morphyrichards.co.uk

Or call our customer registration line

UK 0844 871 0962

IRE 1800 409 119

N.B. Each qualifying product needs to be registered with Morphy Richards individually.

Please note that the 3 year guarantee is only available in the UK and Ireland. Please refer to the 1 year guarantee for more information.

Your 1 year guarantee

To qualify for the 1 year guarantee, the appliance must have been used according to the instructions supplied.

It is important to retain the retailer's receipt as proof of purchase. Staple your receipt to this back cover for future reference.

Please quote the following information if the product develops a fault. These numbers can be found on the base of the product.

Model no.

Serial no.

All Morphy Richards products are individually tested before leaving the factory. In the unlikely event of any appliance proving to be faulty within 28 days of purchase, it should be returned to the place of purchase for it to be replaced.

If the fault develops after 28 days and within 1 year (3 years if registered) of original purchase, you should contact the Helpline number quoting Model number and Serial number on the product, or write to Morphy Richards at the address shown.

You may be asked to return a copy of proof of purchase.

Subject to the exclusions set out below (see Exclusions), the faulty appliance will then be repaired or replaced and dispatched usually within 7 working days of receipt.

If you suspect a fault, follow the simple checks detailed below before retrying the appliance or calling the helpline.

- Check the filters for blockages and clean.
- Check the tools / tubes for blockages.
- Check the plug is firmly in the socket.
- Check the socket is working by trying another appliance.
- Check the fuse in the plug.

- If the filters were blocked or another blockage was noted, leave the product switched 'off' for 60 minutes and retry switching on (as safety cut-out may have activated).

If, for any reason, this item is replaced during the 1 year guarantee period, the guarantee on the new item will be calculated from original purchase date. Therefore it is vital to retain your original till receipt or invoice to indicate the date of initial purchase.

This appliance is intended for domestic use only. Misuse or use for commercial or any other purpose will render the guarantee invalid.

Exclusions

Morphy Richards shall not be liable to replace or repair the goods under the terms of the guarantee where:

- 1 The fault has been caused or is attributable to accidental use, misuse, negligent use or used contrary to the manufacturer's recommendations or where the fault has been caused by power surges or damage caused in transit.
 - 2 The appliance has been used on a voltage supply other than that stamped on the products.
 - 3 Repairs have been attempted by persons other than our service staff (or authorised dealer).
 - 4 The appliance has been used for hire purposes or non domestic use.
 - 5 The appliance is second hand.
 - 6 Morphy Richards reserves the right not to carry out any type of servicing under the guarantee at its discretion.
 - 7 The guarantee excludes consumables such as the filters.
- This guarantee does not confer any rights other than those expressly set out above and does not cover any claims for consequential loss or damage. This guarantee is offered as an additional benefit and does not affect your statutory rights as a consumer. Morphy Richards products are intended for household use only. See usage limitations within the location safety instructions.

Disclaimer

Morphy Richards has a policy of continuous improvement in product quality and design. The company, therefore reserves the right to change the specification of its models at any time.



For electrical products sold within the European Community. At the end of the electrical products useful life, it should not be disposed of with household waste. Please recycle where facilities exist. Check with your Local Authority or retailer for recycling advice in your country.

**IF YOU ARE HAVING A PROBLEM
WITH ONE OF OUR PRODUCTS,
CALL OUR HELPLINE:**

**UK: 0844 871 0960
EIRE: 1800 409 119
SPARES: 0844 873 0726**

morphy richards

The After Sales Division
Morphy Richards Ltd
Mexborough,
South Yorkshire,
England, S64 8AJ

www.morphyrichards.com

